

## 兔抗 GPR1 多克隆抗体

中文名称: 兔抗 GPR1 多克隆抗体

英文名称: Anti-GPR1 rabbit polyclonal antibody

别名: G protein-coupled receptor 1

抗原: GPR1

储存: 冷冻 (-20℃)

宿主: Rabbit

相关类别: 一抗

反应种属: Human

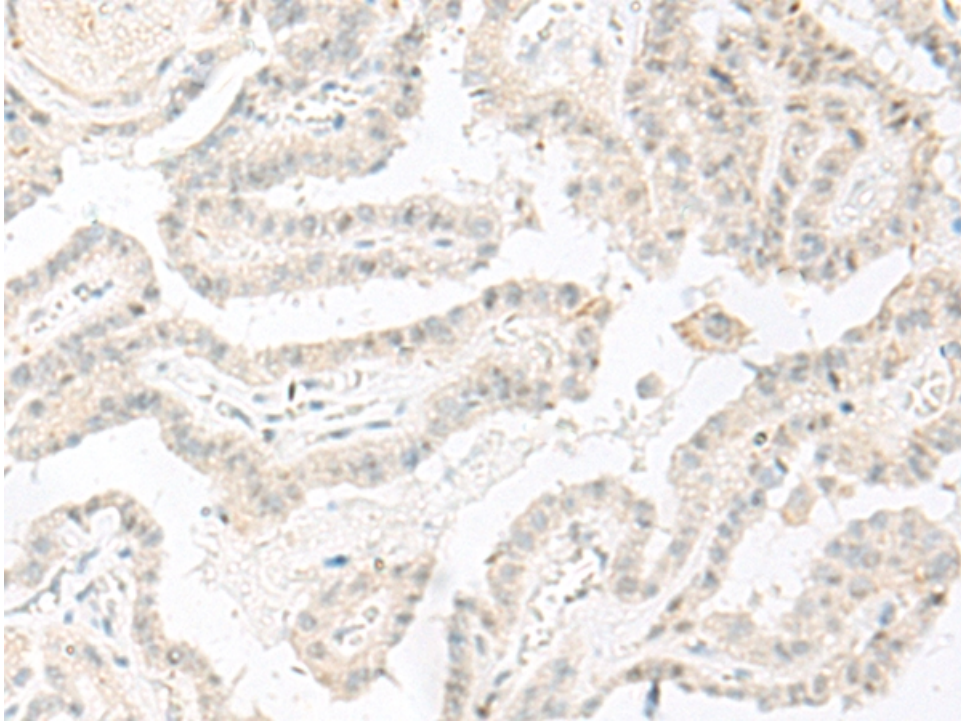
标记物: Unconjugate

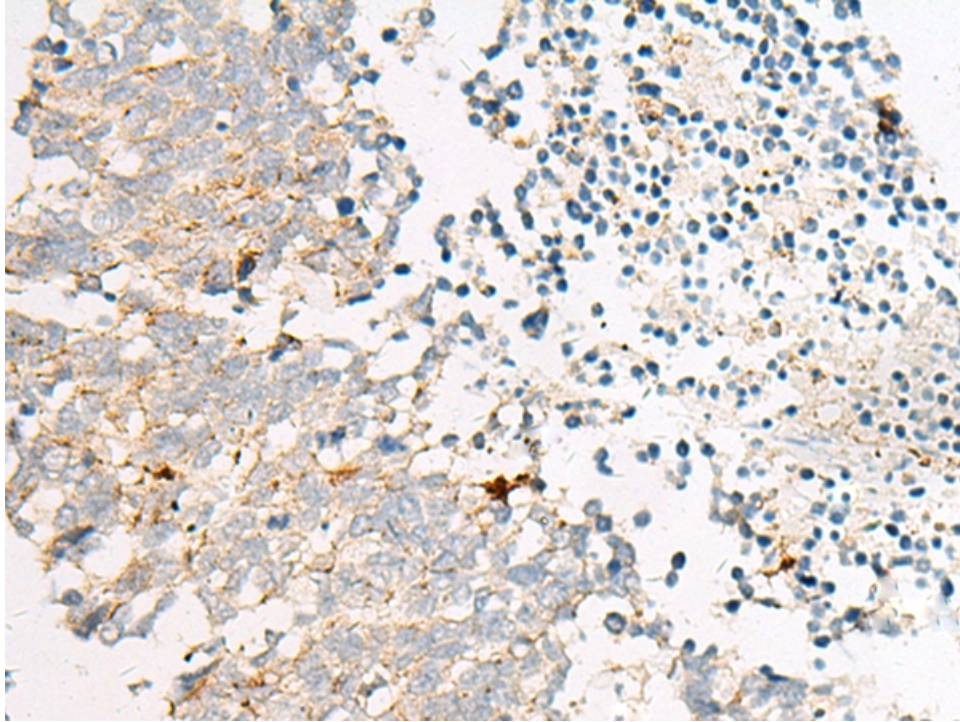
克隆类型: rabbit polyclonal

### 技术规格

<b>Background:</b>	Receptor for the inflammation-associated leukocyte chemoattractant chemerin/RARRES2 suggesting a role for this receptor in the regulation of inflammation. Can act as a coreceptor for HIV-1.
<b>Applications:</b>	ELISA, WB, IHC
<b>Name of antibody:</b>	GPR1
<b>Immunogen:</b>	Synthetic peptide of human GPR1
<b>Full name:</b>	G protein-coupled receptor 1
<b>SwissProt:</b>	P46091
<b>ELISA Recommended dilution:</b>	5000-10000
<b>IHC positive control:</b>	Human lung cancer and Human thyroid cancer
<b>IHC Recommend dilution:</b>	20-100
<b>WB Predicted band size:</b>	41 kDa

WB Positive control:	Hela cell lysate
WB Recommended dilution:	200-1000





kDa

130—

95—

72—

55—

36—

28—

17—

